

OpticalExpress

iScan

YOUR ADVANCED EYECARE REPORT

Name	D.O.B.	Patient I.D.	Appointment Date
------	--------	--------------	------------------

Your iReport: Advanced Eye Care

Thank you for choosing Optical Express for your recent eye surgery consultation.

I am pleased to present you with your personalised iScan: advanced eye care report - exclusive to Optical Express, iScan is a one-of-a-kind diagnostic report that reveals the unique characteristics of your eyes.

Your laser eye surgery consultation comprised of a series of diagnostic screenings:

- ☒ **Tonometer**
A gentle, non-invasive puff of air was applied to your eye to measure intraocular pressure (IOP) - that is, the fluid pressure inside the eye.
- ☒ **Auto-Refractor**
A computer determined measurement of your eye prescription is calculated by how light is changed as it enters the eye, using a sophisticated pupil imaging method.
- ☒ **Auto-Keratometer**
This instrument provides a computer determined measurement of the curvature of your cornea or shape of the front surface of your eye and thus the amount of astigmatism present, using a sophisticated pupil imaging method.
- ☒ **Focimetry**
This instrument was used to determine your current baseline prescription.
- ☒ **Pupillometry**
We measured the diameter or width of your pupil in reduced lighting conditions.

Your consultation included many additional diagnostic tests that are not conducted during a standard eye examination – using state-of-the-art equipment to determine if you are a suitable candidate for corrective laser eye surgery.

As one of the world's largest providers of refractive and laser eye surgery, over £350 million has been invested in new technology in our clinics to ensure our surgeons have access to the most advanced technological innovations in refractive surgery.

Your world is amazing... we'll help you see it that way.

Your iPrescription: Refraction

Optical measurements are used to understand your vision as a formula that becomes your basic eye prescription. This formula is used to create the lenses for your glasses or contact lenses to correct your vision, allowing you to see clearly. A more sophisticated eye prescription is required to determine how eye surgery can correct your vision.

Unaided Vision

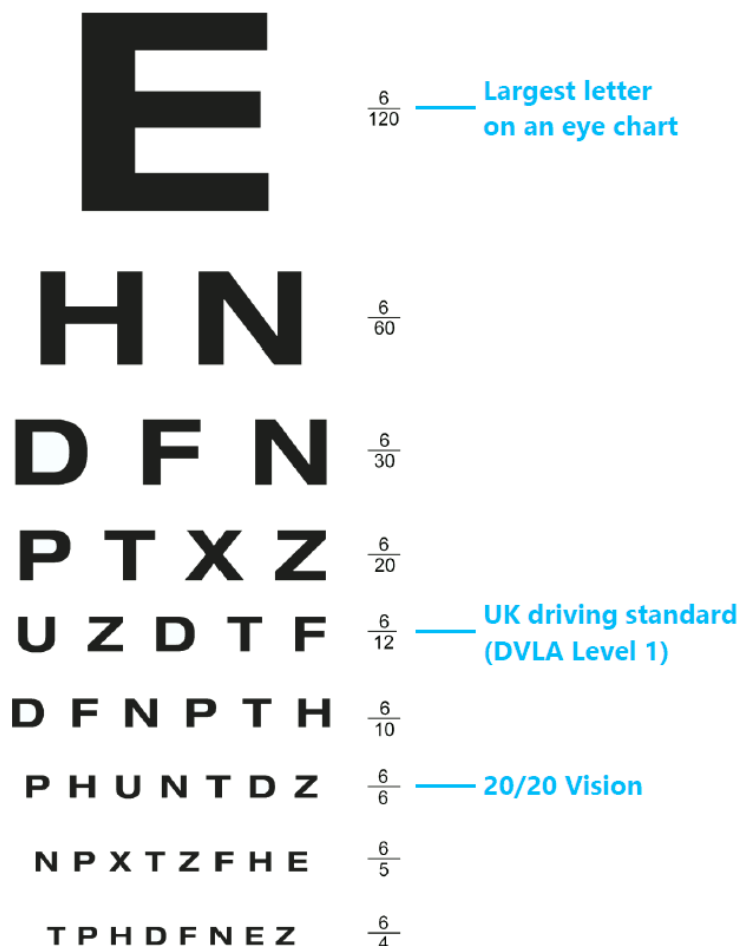
What you see without your glasses or contact lenses

	Right Eye	Left Eye	Binocular
Distance Visual Acuity	6/60+1	6/38	6/38
Near Visual Acuity	6/6	6/6	6/6

Vision With Eye Prescription

	Right Eye	Left Eye
Sphere	-2.75	-2.75
Cyl	-0.25	-0.25
Axis	120	10
Distance Visual Acuity	6/5+1	6/5
Near Visual Acuity	N4	N4

[Click here to understand your eye prescription](#)



Your iHealth: Ophthalmic

Your eyes are an important part of your health and we have performed a thorough examination of the anterior (outer) and posterior (inner) of your eyes with the following results:

Outer Eye	Right Eye	Left Eye	Complete
Eyelids	Clear And Healthy	Clear And Healthy	✓
Cornea	Clear	Clear	✓
Conjunctiva	Clear And Healthy	Clear And Healthy	✓
Lens	Normal For Patient Age	Normal For Patient Age	✓
Pupil	Pupils Equal In Size And Reactive To Light	Pupils Equal In Size And Reactive To Light	✓

Right Eye



Left Eye



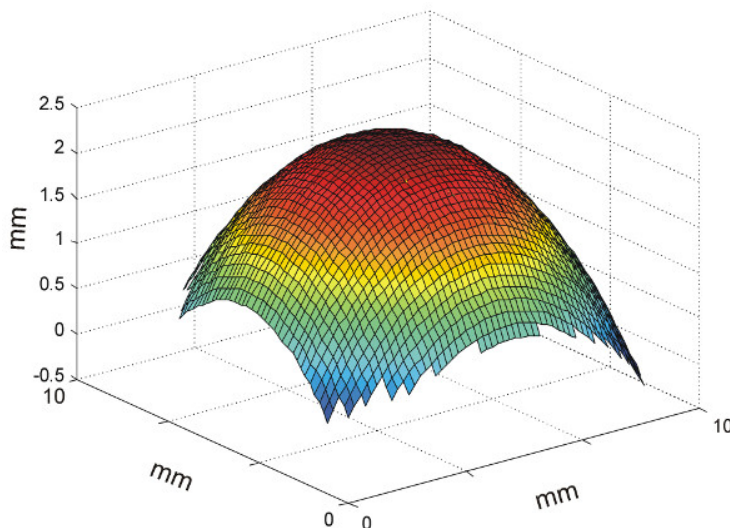
Inner Eye	Right Eye	Left Eye	Complete
Optic Nerve Head Appearance	Healthy NRR & Margins	Healthy NRR & Margins	✓
Cup to Optic Nerve Head Disc Ratio	0.25	0.25	✓
Optic Nerve Head Colour	Normal	Normal	✓
Macula	Normal	Normal	✓
Peripheral Retina Evaluation	Normal	Normal	✓
Blood Vessel Appearance	Healthy Calibre And Pathways	Healthy Calibre And Pathways	✓

Your iScan: Diagnostic

A more sophisticated analysis than offered by a standard eye prescription is required to determine your suitability for eye surgery. Your consultation involved one of the most in-depth eye examinations you will ever have, including a number of clinical measurements and automated scans.

Corneal Thickness

	Right Eye	Left Eye
Pachymetry (μm)	639	623



Pentacam is the ultimate diagnostic tool that uses a sophisticated camera system to scan the anterior eye (cornea, anterior chamber, iris, and lens) and construct a 3D map of the eye from up to 25,000 measured data points that can be viewed and analysed by your clinical team.

The data allows us to view the eye from 25 different angles with a three dimensional analysis of all the structures mentioned.

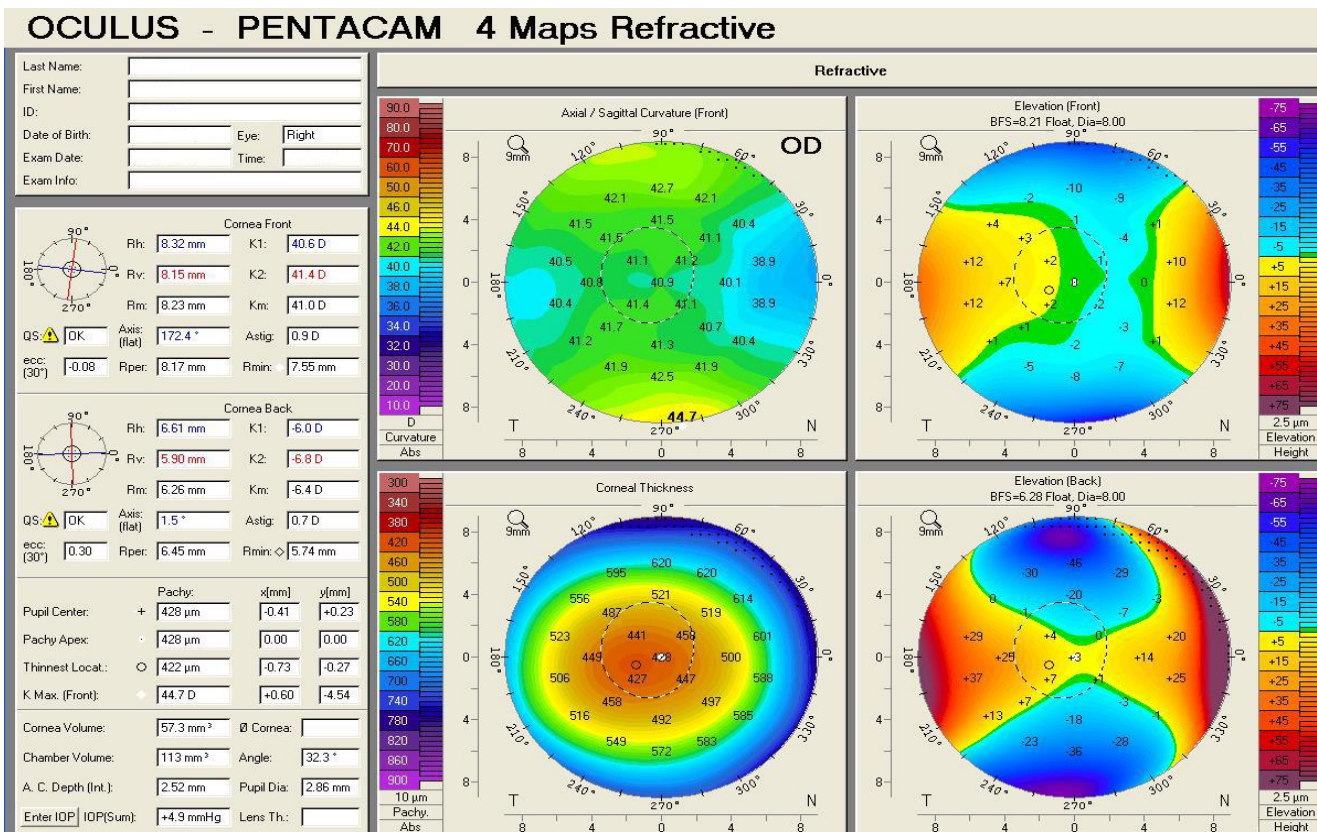
Most importantly, this allows us to have a precise elevation map of the back surface of the cornea unparalleled by any previous technology. This information helps us to make sure the recommendations we make for your treatment will be as safe as possible.

Clinical Outcomes

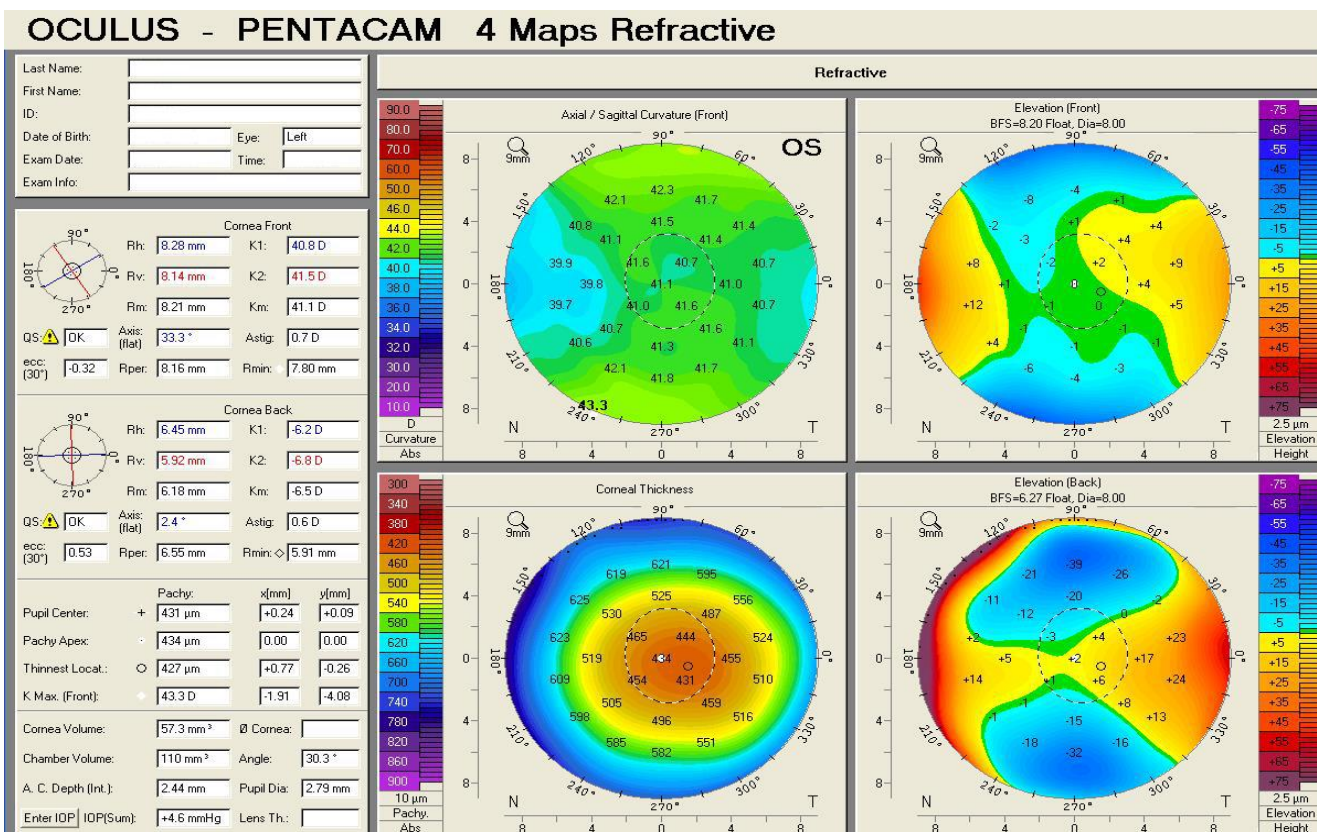
	Right Eye	Left Eye
Intraocular Pressure (Average Using non-contact - mmHg)	14.75	15.25
Scotopic Pupil Size (mm)	6.50	6.50
Keratometry Readings (Dioptres)	44.00 / 44.50 @ 89.00	43.50 / 43.50 @ 158.00

Your iScan: Diagnostic

Right Eye



Left Eye



Your Treatment

iLASIK

LASIK treatment is the most commonly used method of laser eye surgery; Optical Express performs iLASIK, an advanced form of LASIK that uses blade-free, all-laser technology to offer outstanding precision, safety and results, making it one of the premium laser eye surgery treatments available in the world today.

Performed under local anaesthetic (eye drops), iLASIK comprises two computer-guided, ultra-fast, precision lasers that release cool beam lasers; the first to create a thin protective flap and the second to gently reshape the cornea of your eye to correct your vision.

Both eyes can be treated on the same day with iLASIK laser eye surgery and patients experience little discomfort during or after the procedure with most iLASIK patients noticing immediate results as your eyes are free to recover naturally.

iLASIK: A Step-by-Step Guide

1. iLASIK preparation

Anaesthetic drops are applied to numb the eye and a lid holder is put in place to prevent the eye's natural blink reflex.

2. iLASIK protective flap

A thin flap is created using a cool beam laser and gently lifted by your surgeon to reveal the inner corneal tissue.

3. iLASIK vision correction

A second cool beam laser is then applied for a matter of seconds, sending tiny computer controlled pulses to gently reshape the inner layer of the cornea, thus correcting your eye prescription.

4. iLASIK completion

Your surgeon will gently replace the protective flap securely to its original position where it heals naturally over the following days. The healing process begins immediately and most patients will see an improvement in their vision within a few hours.

Despite its sophistication, the treatment itself only takes minutes to perform, yet the impact it can have on your life can be everlasting.

Your Treatment Day

Thank you for choosing Optical Express for your eye surgery and I trust you are excited about your new vision; please find confirmation of your treatment day:

Date: 01/01/2018

Time: 10:30

Location: [Glasgow St. Vincents Street](#)

If you wear contact lenses, please remember to follow the advice given at your consultation and stop wearing them from the date that you have been advised.

You can trust Optical Express to take care of one of your most precious senses... your sight and should you have any questions leading up to your treatment date, please feel free to call 0800 077 80 90 where our dedicated clinical care team will be pleased to discuss them with you.

We look forward to seeing you soon.

Your Surgeon



Mr Antonio Uceda-Montanes

MD ISRS AAO

Mr Antonio Uceda is a fully trained ophthalmologist who has undergone additional specialist training in refractive surgery. He has performed more than 12,000 procedures, including LASIK, LASEK, ICLs, intracorneal inlays, cataract and natural lens replacement treatments.

Mr Uceda-Montanes underwent postgraduate training in ophthalmology, general and ocular pathology at Howard University, Washington DC and Virgen del Rocio University Hospital in Seville. He has been Medical Director and responsible for the refractive surgery unit at a world-leading institution in ocular surgery - Visum Corporación Oftalmologica. He also held a Principal Researcher position at the Spanish Ministry of Health sponsored Network of Collaborative Research in Ophthalmology (RETICS) whose main achievements in refractive surgery and keratoconus are regularly published in peer reviewed scientific journals.

Due to his dedication to laser eye surgery, Mr Uceda-Montanes was appointed as a Physician Trainer by VISX to lecture and teach surgeons throughout the world how to obtain the best results from this technology.

Professional Memberships

- General Medical Council (GMC) – Member
- International Society of Refractive Surgery (ISRS) – Member
- American Academy of Ophthalmology (AAO) – Member
- Spanish Society of Ophthalmology (SEO) - Member

Optical Express: Top Reasons To Choose Us

Optical Express is the UK's number one provider of laser eye surgery. Each week, we perform more procedures than any other provider, making us the most popular choice for laser eye surgery treatments.

1. We are the UK's No.1 provider and perform thousands of laser eye surgery procedures each week, more than any other provider in the UK.
2. Over £400million has been invested in our clinics and state-of-the-art technology.
3. Our leading surgeons have performed more than 2 million procedures worldwide.
4. All of our surgeons are registered with The General Medical Council (GMC).
5. Over 99% of our patients achieve 20/20 vision or better after treatment*.
6. Over 99% of laser eye surgery patients would recommend us to their family and friends†.
7. We offer the best geographical coverage, with consultation and treatment clinics across the UK & Ireland.
8. We are the only eye care provider to offer patients a complete eye care solution, from glasses and contact lenses to laser eye surgery and lens surgery.
9. We offer finance packages including interest free credit.

Optical Express: a world of advanced eyecare

** In a study of 190,231 Optical Express patients with the most common prescriptions we treat, 99.2% achieved 20/20 vision or better following treatment.*

† In a survey of 303,665 Optical Express patients, 99% told us they would recommend us to their family and friends.